



LPZ P1B502ZA



LPZ P2B801ZA



LPZ P3A8



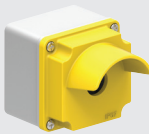
LPX CB01



LPX CB10



LPZ M1A5



LPZ M1A5P



LPZ M5A8



LPZ M4A8



LPZ M2A8



LPZ M6E8



**Polycarbonate pushbutton control stations**

IP66, IP67, IP69K

- New styling with incorporated anti-rotation facility for actuators
- M16 or M20/25 cable gland knock-outs on all sides and base
- Easy wiring with internal contact identification on cover and on base
- Contact blocks and lamp modules are base mounted with screw terminals facing forward

| type | button colour | contact | cover colour | description | dimensions (mm)<br>(H) (W) (D) |  |  |
|------|---------------|---------|--------------|-------------|--------------------------------|--|--|
|------|---------------|---------|--------------|-------------|--------------------------------|--|--|

**Complete pushbutton stations**

**1 hole pushbutton stations**

|              |       |        |        |                              |    |    |    |
|--------------|-------|--------|--------|------------------------------|----|----|----|
| LPZ P1B801ZA | green | 1 x NO | grey   | flush pushbutton station     | 72 | 72 | 56 |
| LPZ P1B802ZA | red   | 1 x NC | grey   | extended pushbutton station  | 72 | 72 | 56 |
| LPZ P1B501ZA | red   | 1 x NC | yellow | spring ret mushroom station  | 72 | 72 | 56 |
| LPZ P1B502ZA | red   | 1 x NC | yellow | latch mushroom twist release | 72 | 72 | 56 |

**2 hole pushbutton stations**

|              |       |        |      |                             |     |    |    |
|--------------|-------|--------|------|-----------------------------|-----|----|----|
| LPZ P2B801ZA | green | 1 x NO | grey | flush pushbutton station    | 117 | 72 | 56 |
|              | red   | 1 x NC | grey | extended pushbutton station |     |    |    |

|               |       |        |      |                              |     |    |    |
|---------------|-------|--------|------|------------------------------|-----|----|----|
| LPZ P2B802ZA* | green | 1 x NO | grey | flush pushbutton             | 151 | 72 | 56 |
|               | red   | 1 x NC | grey | latch mushroom twist release |     |    |    |

\*Taller housing (H) 151 mm to accommodate padlock shroud LPX AU158 (see page D-5)

**3 hole pushbutton stations**

|              |       |        |      |                     |     |    |    |
|--------------|-------|--------|------|---------------------|-----|----|----|
| LPZ P3B802ZA | green | 1 x NO | grey | flush pushbutton    | 151 | 72 | 56 |
|              | red   | 1 x NC | grey | extended pushbutton |     |    |    |
|              | green | 1 x NO | grey | flush pushbutton    |     |    |    |

**Empty enclosures (without actuators and contact blocks)**

IP66, IP67, IP69K

| type     | holes  | rows | cover  | description                       | (H) | (W) | (D) |
|----------|--------|------|--------|-----------------------------------|-----|-----|-----|
| LPZ P1A5 | 1 hole | 1    | yellow | empty polycarb pushbutton station | 72  | 72  | 56  |
| LPZ P1A8 | 1 hole | 1    | grey   | empty polycarb pushbutton station | 72  | 72  | 56  |
| LPZ P2A8 | 2 hole | 1    | grey   | empty polycarb pushbutton station | 117 | 72  | 56  |
| LPZ P3A8 | 3 hole | 1    | grey   | empty polycarb pushbutton station | 151 | 72  | 56  |
| LPZ P4A8 | 4 hole | 1    | grey   | empty polycarb pushbutton station | 186 | 72  | 56  |
| LPZ P5A8 | 5 hole | 1    | grey   | empty polycarb pushbutton station | 220 | 72  | 56  |
| LPZ P6A8 | 6 hole | 1    | grey   | empty polycarb pushbutton station | 256 | 72  | 56  |

**Base mounting contact blocks and indicating modules for above stations**

|          |       |        |  |
|----------|-------|--------|--|
| LPX CB10 | green | 1 x NO | base mount screw terminal contact block for above stations |
| LPX CB01 | red   | 1 x NC | base mount screw terminal contact block for above stations |

|           |                |  |
|-----------|----------------|--|
| LPX LPBB* | * 12-30 VAC/DC | base mount LED integrated lamp module for above stations |
| LPX LPBM* | * 185-265 VAC  | base mount LED integrated lamp module for above stations |

\* Replace with: 3 (green) / 4 (red) / 5 (yellow) / 6 (blue) / 8 (white) - for colours

Note: Base mounting contact blocks are not suitable for push on - push off actuators.

**Metallic control stations (without actuators and contact blocks)**

IP66, IP67

- Enclosures made of aluminium alloy suitable for pushbuttons, selector switches and pilot lights
- Cable entry Ø21 mm (for M20 or PG13.5 cable glands) - no cable entry for 8/12/16 way

|            |         |       |        |                                     |     |     |    |
|------------|---------|-------|--------|-------------------------------------|-----|-----|----|
| LPZ M1A5   | 1 hole  | 1     | yellow | industrial metal pushbutton station | 80  | 80  | 73 |
| LPZ M1A5P  | 1 hole  | 1     | yellow | p/button station (with half shroud) | 80  | 80  | 73 |
| LPZ M1A8   | 1 hole  | 1     | grey   | industrial metal pushbutton station | 80  | 80  | 73 |
| LPZ M2A8   | 2 hole  | 1     | grey   | industrial metal pushbutton station | 130 | 80  | 73 |
| LPZ M3A8   | 3 hole  | 1     | grey   | industrial metal pushbutton station | 170 | 80  | 73 |
| LPZ M4A8   | 4 hole  | 1     | grey   | industrial metal pushbutton station | 170 | 80  | 73 |
| LPZ M5A8   | 5 hole  | 1     | grey   | industrial metal pushbutton station | 230 | 80  | 73 |
| LPZ M6A8   | 6 hole  | 1     | grey   | industrial metal pushbutton station | 230 | 80  | 73 |
| LPZ M8CA8  | 8 hole  | 2 x 4 | grey   | industrial metal pushbutton station | 160 | 160 | 90 |
| LPZ M12CA8 | 12 hole | 3 x 4 | grey   | industrial metal pushbutton station | 170 | 190 | 90 |
| LPZ M16CA8 | 16 hole | 4 x 4 | grey   | industrial metal pushbutton station | 190 | 250 | 90 |

**Empty metallic housings (without any holes)**

IP66, IP67

|          |   |   |      |                                    |     |     |    |
|----------|---|---|------|------------------------------------|-----|-----|----|
| LPZ M1E8 | - | - | grey | empty aluminium alloy housing only | 80  | 80  | 73 |
| LPZ M2E8 | - | - | grey | empty aluminium alloy housing only | 130 | 80  | 73 |
| LPZ M3E8 | - | - | grey | empty aluminium alloy housing only | 170 | 80  | 73 |
| LPZ M5E8 | - | - | grey | empty aluminium alloy housing only | 160 | 160 | 90 |
| LPZ M6E8 | - | - | grey | empty aluminium alloy housing only | 170 | 190 | 90 |
| LPZ M7E8 | - | - | grey | empty aluminium alloy housing only | 190 | 250 | 90 |